

Media
Works

Accelerated Learning Programmes

ADULT EDUCATION and Training Project Portal

Navigate is a Learning Intervention Management System (LIMS). It does more than just track learners; it manages all aspects of the learning intervention. The days of training programmes running unmanaged are over. With tight budgets and strict deadlines, training managers are required to deliver more with less.

Successful management requires meaningful information which is derived from accurate data. The hurdle is that the capturing of that data can be tedious and time consuming. **Navigate** uses pre-emptive methods to facilitate the data capture process.

At a Glance

Navigate is project based with each project having a defined timeline. The learner's progress is tracked along this timeline to produce meaningful management reports. No more surprise project overruns. **Navigate** is designed to manage both computer assisted interventions as well as traditional face-to-face training.

Navigate incorporates all aspects that may influence the success of a learning intervention. These include monitoring the progress of the learner, the performance of the facilitator as well as the intervention of the project manager.

Powered by Media Works

Media Works is the expert in Adult Education and Training (previously ABET). Established in South Africa in 1996 we have a **national footprint** specialising in the provision of NQF (National Qualifications Framework) Level 1 training.

Our **outstanding track record** is undeniable and our client list is impressive. However, it is our passion for the provision of fundamental human skills that is the driving force behind our business. Media Works does not simply educate; it builds, enlightens and ignites fires in people.



AET Project Management Software

Navigate supports Media Works' AET programmes. Understanding workflow processes and integrating 15 years of training knowledge, **Navigate** puts the power of project management in the hands of the client.

Navigate performs projections on progress and provides early warnings should problems be detected. In order to manage projects you need accurate information. **Navigate** is the source of that information.

It answers questions like:

- Is the training on track?
- Is there continuous assessment being done?
- Are the learners achieving the required standard?
- Will the learners be ready for the exams?
- Are the facilitators providing the correct support and feedback?
- Has the project manager provided regular feedback?
- Is action been taken where action is required?

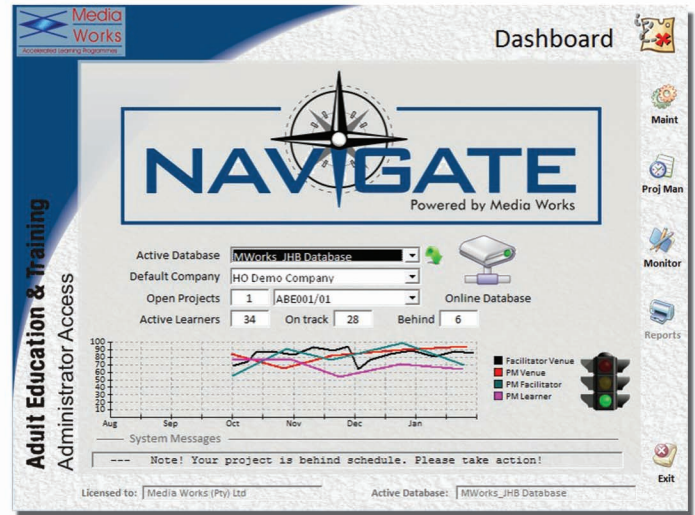
And if a project does overrun;

- Is there an audit trail of the problems causing the delay?
- Were there early warning notifications to the fact?
- Is there a history of actions taken to rectify these problems?

Perfecting AET Project Management

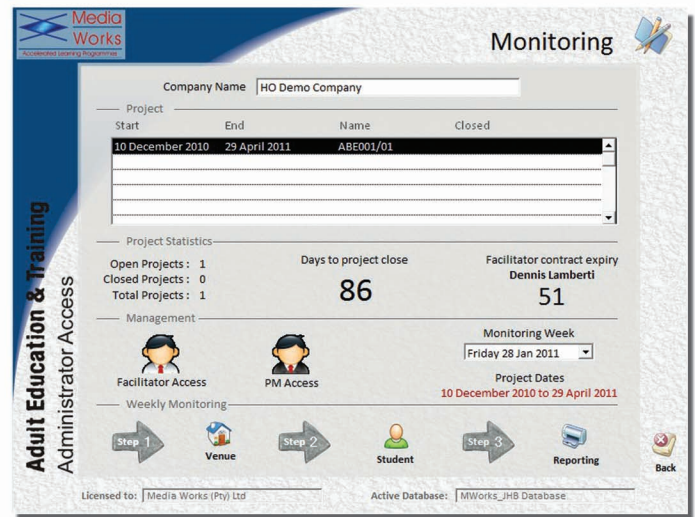
Navigate takes AET project management to the next level but monitoring the entire learning intervention. It is not enough to simply monitor your learners progress. You need to keep your finger on the pulse of all aspects of the process. **Navigate** is the tool that does this for you.

Media Works. It's never too late to learn.



Lesson	Comp High Ave	Score	Comp Time	WB Score High Ave	Complete
Lesson 1 - Alphabet 1	80	80	0:32	73	3 November 2010
Lesson 2 - Alphabet 2	75	75	0:24	82	7 November 2010
Lesson 3 - Alphabet 3	85	85	1:05	85	12 November 2010
Lesson 4 - Alphabet 4	60	60	0:30	74	18 November 2010
Lesson 5 - Alphabet 5	70	70	0:25	68	22 November 2010
Lesson 6 - Alphabet 6	100	100	0:32	72	27 November 2010
Lesson 7 - Alphabet 7	95	95	0:21	78	1 December 2010
Lesson 8 - Alphabet 8	75	75	0:13	93	4 December 2010

Week	Lesson Comp	WB	Attendance Comp	Fac	Indicators 1 2 3	Capture Date
3 November 2010	2	2	100	100	2 2 2	7 November 2010
7 November 2010	4	5	80	80	2 2 2	10 November 2010
12 November 2010	7	7	120	75	3 3 3	15 November 2010
18 November 2010	10	8	100	100	2 2 2	21 November 2010
22 November 2010	18	17	100	100	3 3 3	24 November 2010



Call the Media Works Team on 0861 MWORKS / 0861 696 757

